

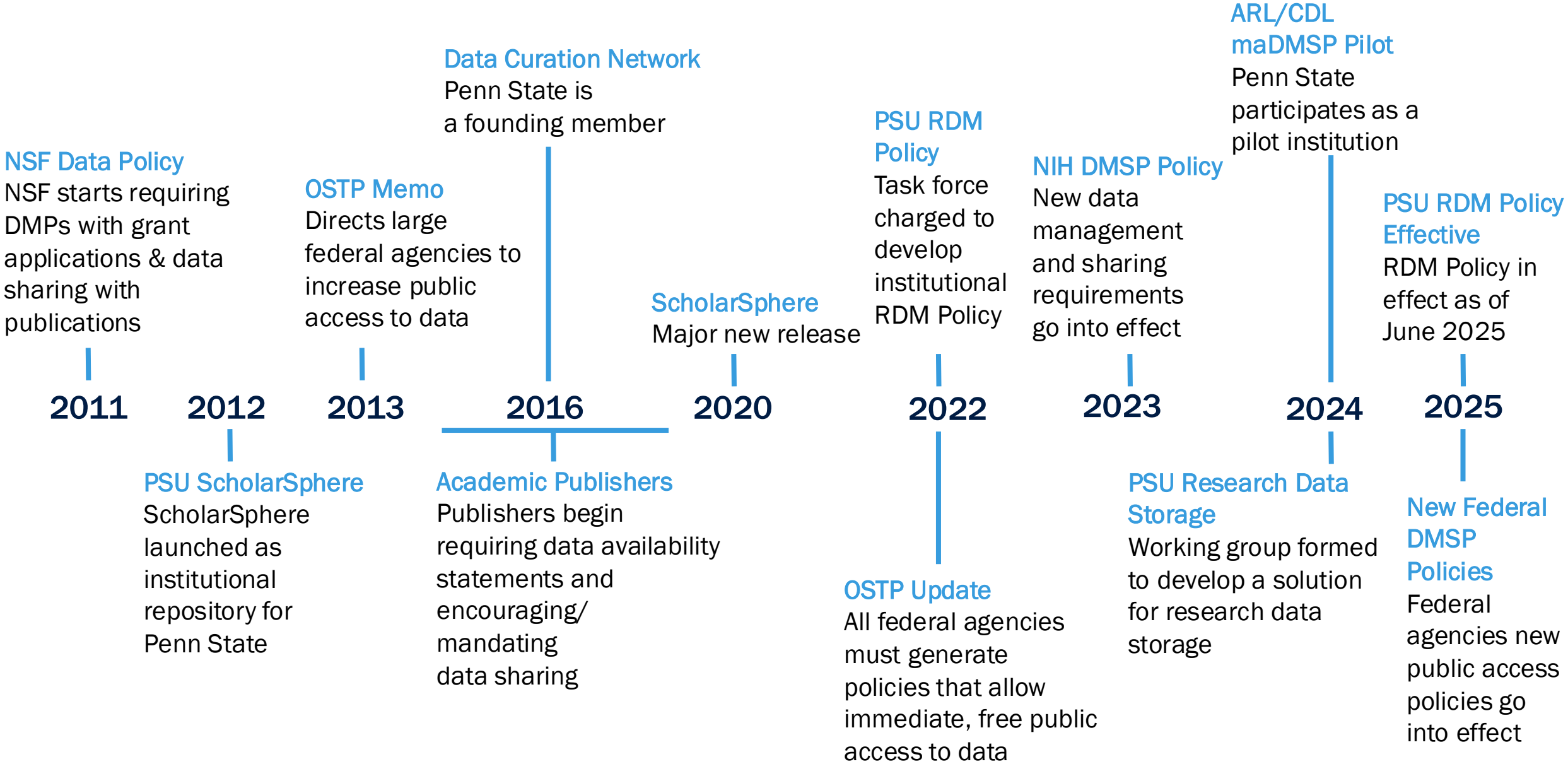
PennState



Research Data Stewardship Program

Briana Wham , Director of Research Data Stewardship

The Changing Research Data Landscape: Nationally & at Penn State



RP 15 Research Data Management

- **Effective: June 26, 2025**
- The University asserts ownership over Research Data for projects conducted at the University because the University is responsible for complying with laws, regulations, and requirements of its research sponsors.
- Researchers are the primary stewards of Research Data. University policies ensure that ownership considerations do not hinder researchers from reusing Research Data, collaborating, creating scholarly works, sharing, or taking a copy of Research Data should they leave the University.
- Retention: 7 years after final reporting or publication, whichever occurs later.
- The University affirms its dedication to not impose unnecessary restrictions on practices and encourages researchers to make data publicly accessible via established repositories whenever possible, following university, ethical, legal, and intellectual property requirements.
- To enable the University to have access to Research Data upon reasonable request, researchers need to store their data in an accessible place.
- Outlines requirements and processes for research data when leaving the university

Institutional Responsibilities

The University's responsibilities, as carried out by department, school, center, institute, or administrative staff include, but are not limited to:

- Implementing relevant policies, procedures, and/or guidelines that set institutional expectations and requirements for responsible management of research data and the proper conduct of individuals interacting with research data.
- Protecting the right of research personnel to carry on research and publish the results and underlying data.
- Protecting the rights of research personnel to access research data resulting from research in which they participated. Reviewing, negotiating, and executing required agreements and contracts associated with data use, sharing, transfer, and collaborations to ensure the University can meet obligations concerning the protection and integrity of research data.
- Assessing compliance with University policies, requirements from regulatory and compliance bodies, applicable laws and other relevant agreements regarding the management, retention, and sharing of research data and outputs; and coordinating institutional response and actions as necessary.
- Offering baseline infrastructure for the storage, computing, and protection of research data and outputs and providing guidance for Research Data that needs additional support or resourcing.
- Providing training (directly or via third-party) to support best practices in data management.



**RESEARCH
DATA
STEWARDSHIP**

POLICY GOVERNANCE

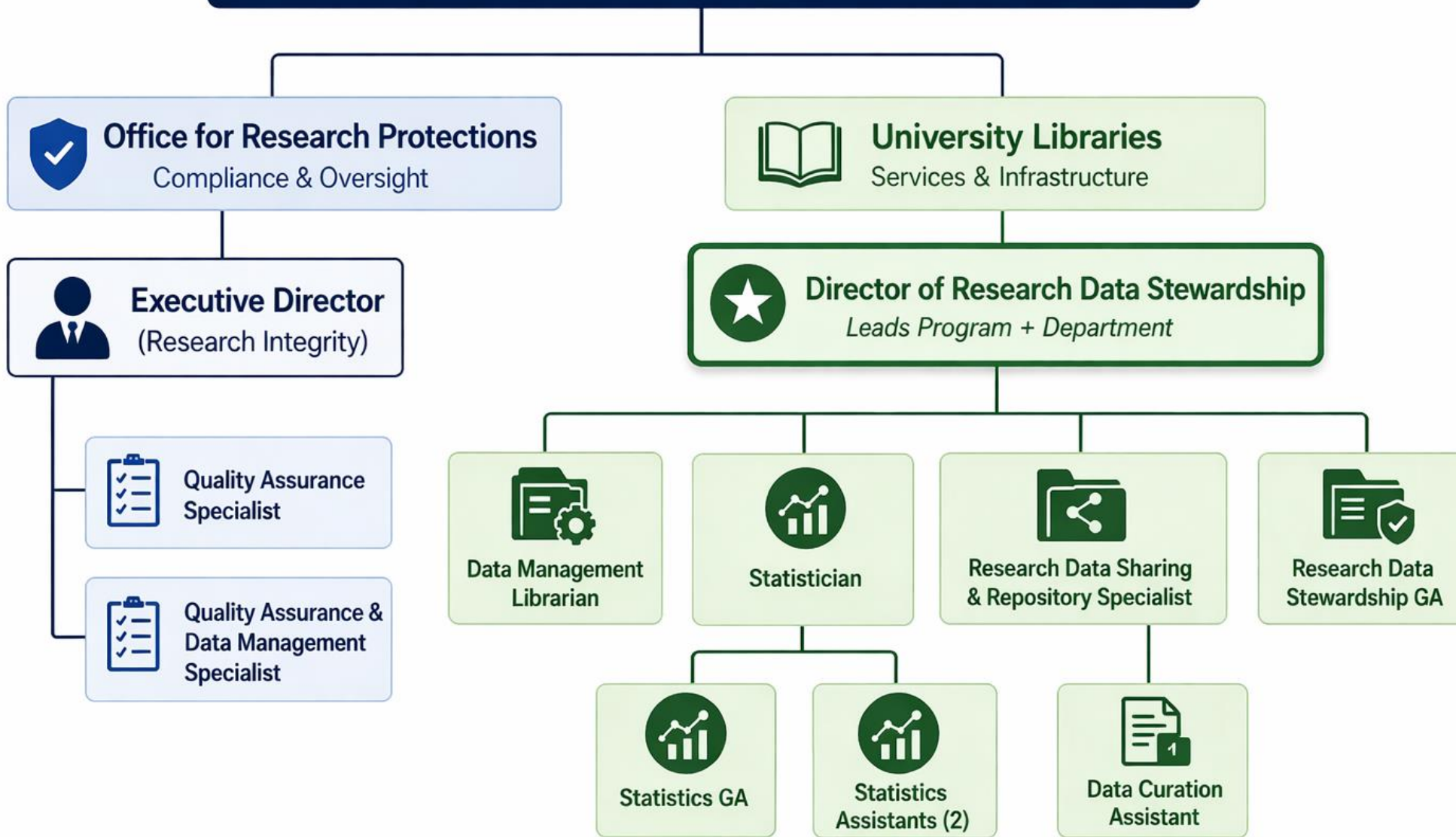
STRATEGY COORDINATION

**INFRASTRUCTURE & SERVICE
DEVELOPMENT**

COMPLIANCE SUPPORT

CULTURE CHANGE

Research Data Stewardship Program



Coordinated model across compliance, infrastructure, and researcher support



Briana Wham

Director of Research
Data Stewardship

Jennifer Valcin

Statistician

Alaina Pearce

Data Management
Librarian

Allie Shoffner

Data Curation
Assistant

Jessica Scharf

Data Curation
Assistant



Sara He

Research Data
Stewardship Graduate
Assistant



Timilehin Durotoye

Statistics
Graduate Assistant



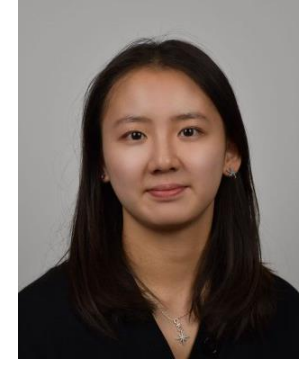
Zachary Davis

Statistics Assistant



Leo Soccio

Statistics Assistant

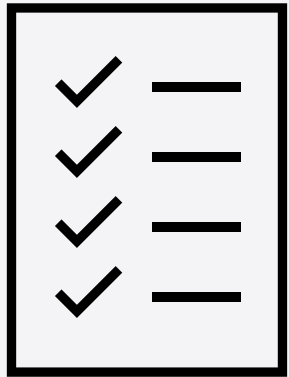


Annie Wang

Statistics Assistant

Services

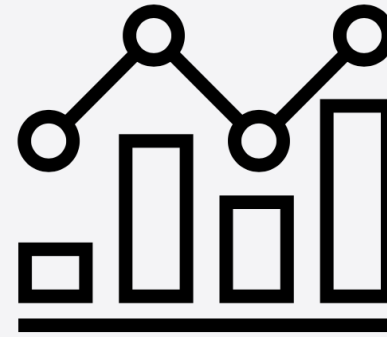
*Available for all campus users
(undergraduate students,
graduate students, postdoctoral
scholars, staff, and faculty) at no
cost!*



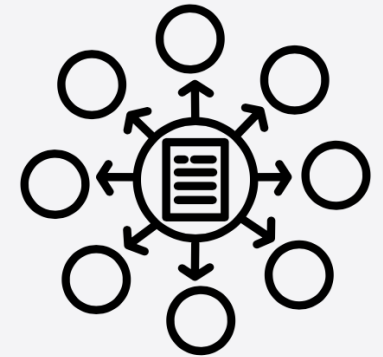
Meeting research data requirements



Data Management
Planning &
Implementation



Statistical Data Analysis



Data Sharing & Curation

Consultations | Workshops & Training | Guest Lectures | Online Resources | Advocacy

ScholarSphere

An open access institutional repository for publications, research data, & creative works

- Self-deposit for PSU faculty, staff, and students at no cost
- Supports data sharing requirements and “F.A.I.R” principles
- Satisfies requirements of PSU Open Access Policy (AC02) and data sharing policies
- Work drafts and versioning
- Flexible access and visibility controls
- Persistent access and preservation of work through DOI minting
- Monthly reports tracking download statistics
- Curation services from PSU Librarians and the Data Curation Network



Courtney Karmelita
Executive Director,
Ethical Research and Outreach
Research Integrity Officer



Heather Coslo
Quality Assurance &
Data Management
Specialist



Jany Martinez
Quality Assurance
Specialist

OUR TEAM - ORP
Quality Assurance Program

Data Management Reviews

The Quality Assurance program conducts DMRs to ensure compliance with sponsor requirements and verify that RP15 is being followed.

A review of how the study team is adhering to the data management and sharing plan submitted in the grant application and the applicable data management and sharing regulations

Criteria for routine monitoring inspections:

- Funded work requiring a data management and sharing plan
- High volume
- Previous or ongoing concerns about data management practices
- Security considerations

<https://researchsupport.psu.edu/orp/quality-assurance/data-management-reviews/>

Research Data Stewardship Needs Assessment

Goals:

- Examine current research data management and sharing practices
- Understand the challenges related to policy, compliance, infrastructure, and funding
- Identify gaps in existing services and infrastructure
- Inform priorities for Penn State's new Research Data Stewardship Program



Length: ~ 15 minutes

Intended Audience: Faculty, Staff,
Postdoctoral Scholars, & Graduate
Students who collect, generate, or use
research data

Provost Endorsed Training in Research Data Stewardship

Goals/Learning Objectives:

- Interpret and apply Penn State (e.g., RP15, AD95, IP06, HRG20, RA40) and Federal policies to research data stewardship decisions and practices.
- Implement research data stewardship best practices that support rigorous and reproducible research workflows.
- Evaluate and select appropriate data storage solutions and repositories based on data type, funder requirements, legal, ethical, and access considerations.
- Develop a written research data stewardship approach for their project or research group.



Activities (~ 10 hours total)

- 3 Workshops
 - Penn State & Federal Research Data Policies
 - Research Data Management
 - Data Documentation
- 2 Real-World Applications
 - Create a reusable dataset (can use own data)
 - Prepare a Research Data Strategy for themselves or research group

Contacting Research Data Stewardship Department

I know what I need or where I need to refer someone:

I think RDS can help me but I'm not sure what I need and who can help me:

Use Bookings to schedule consultation:
[Research Data Stewardship \(office365.com\)](https://www.office365.com)

Send us an email:
ul-rds@lists.psu.edu

JOIN OUR MAILING LIST!

